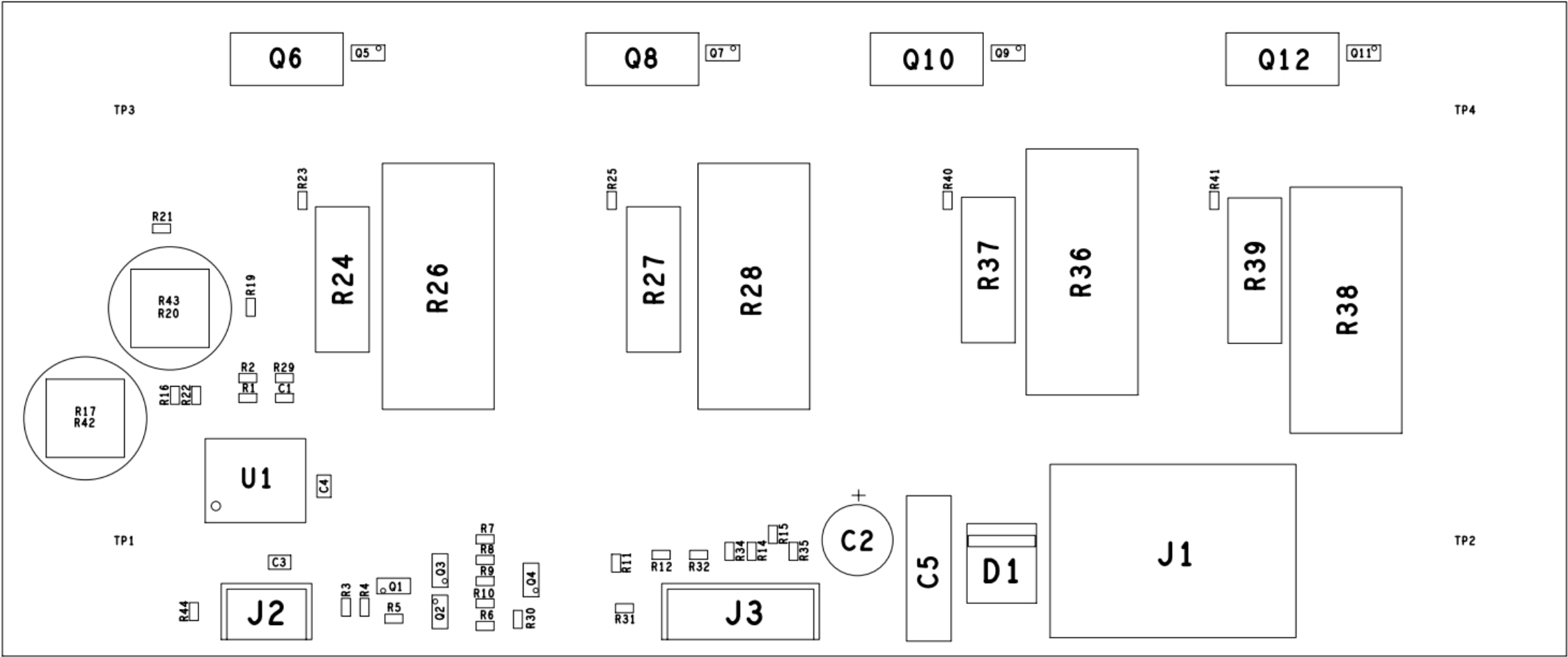


# TBOH02 SELF POWERED ACTIVE LOAD

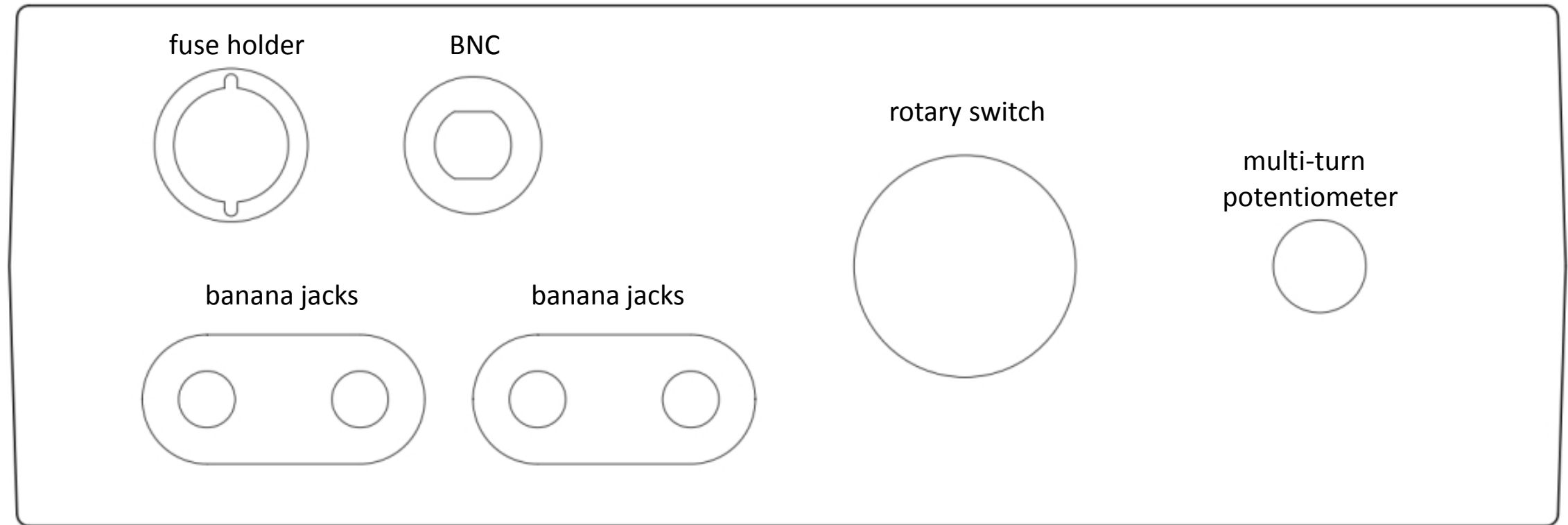


# Self powered active load assembly

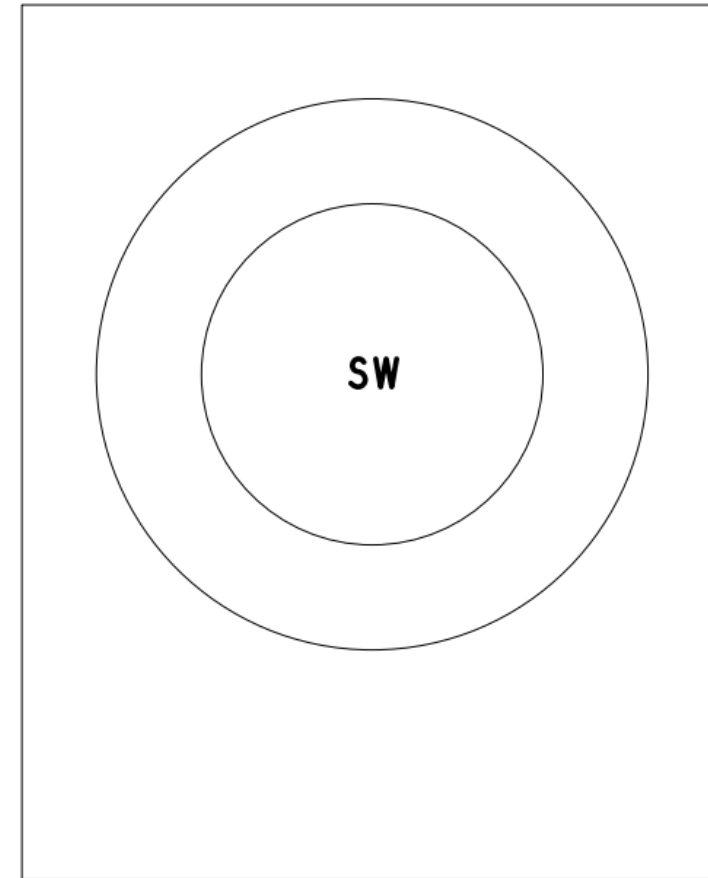
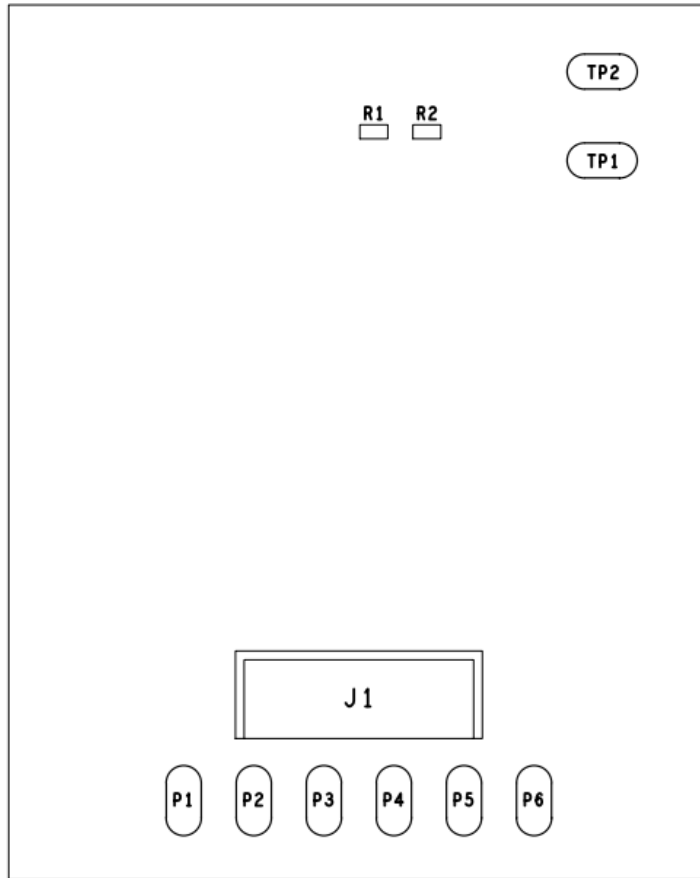
Main board assembly:

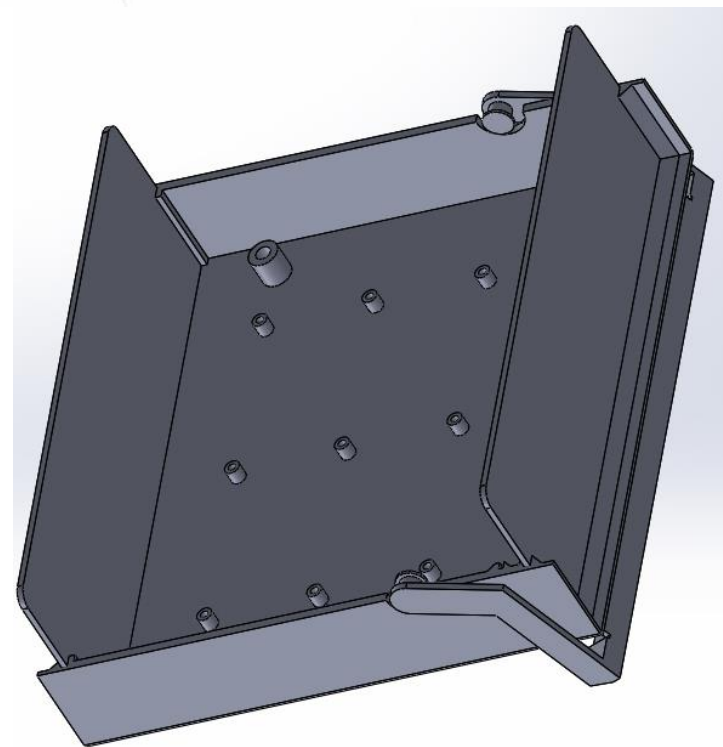
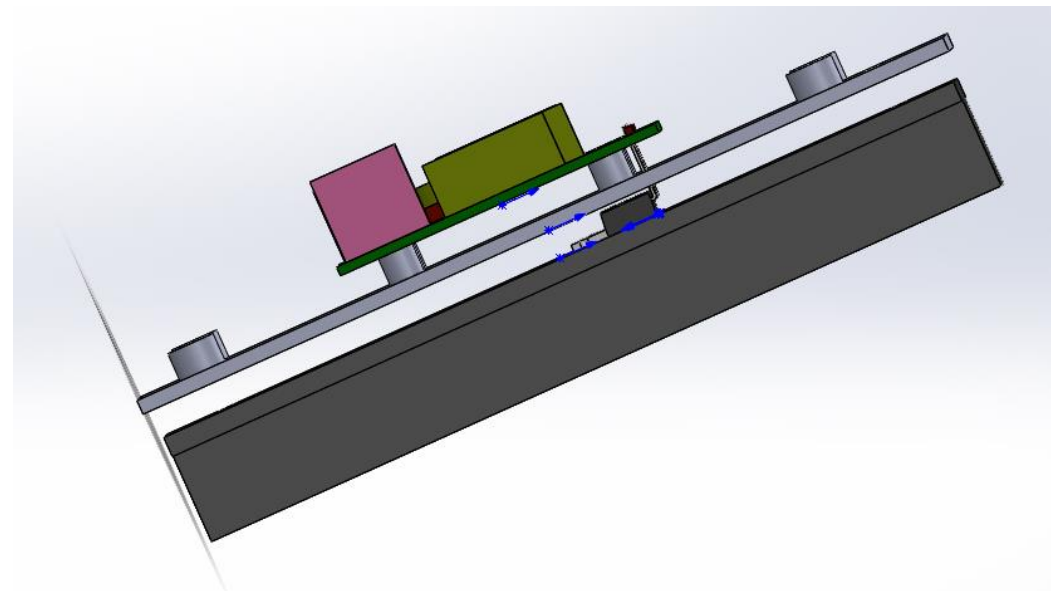
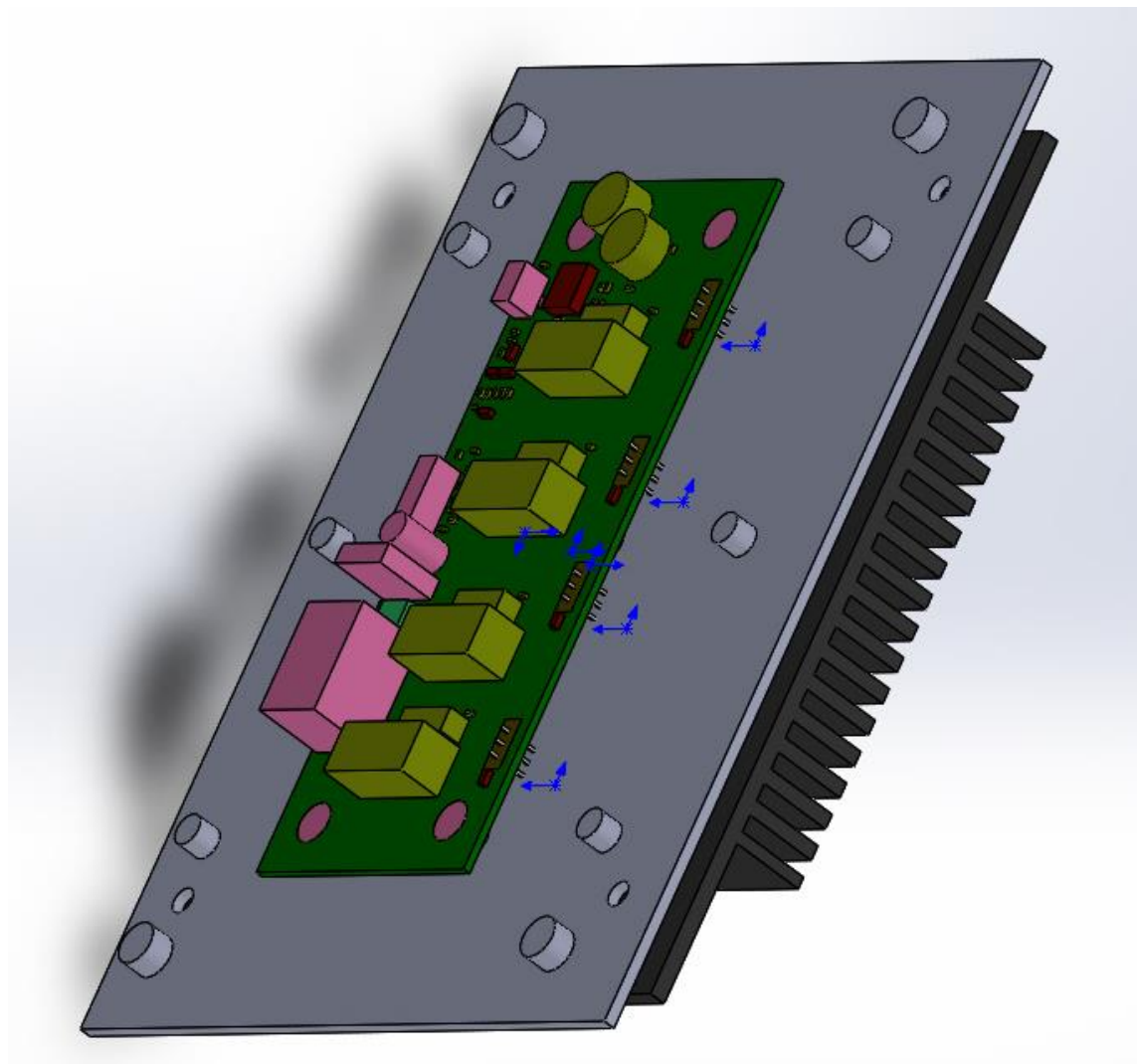


Front panel assembly:

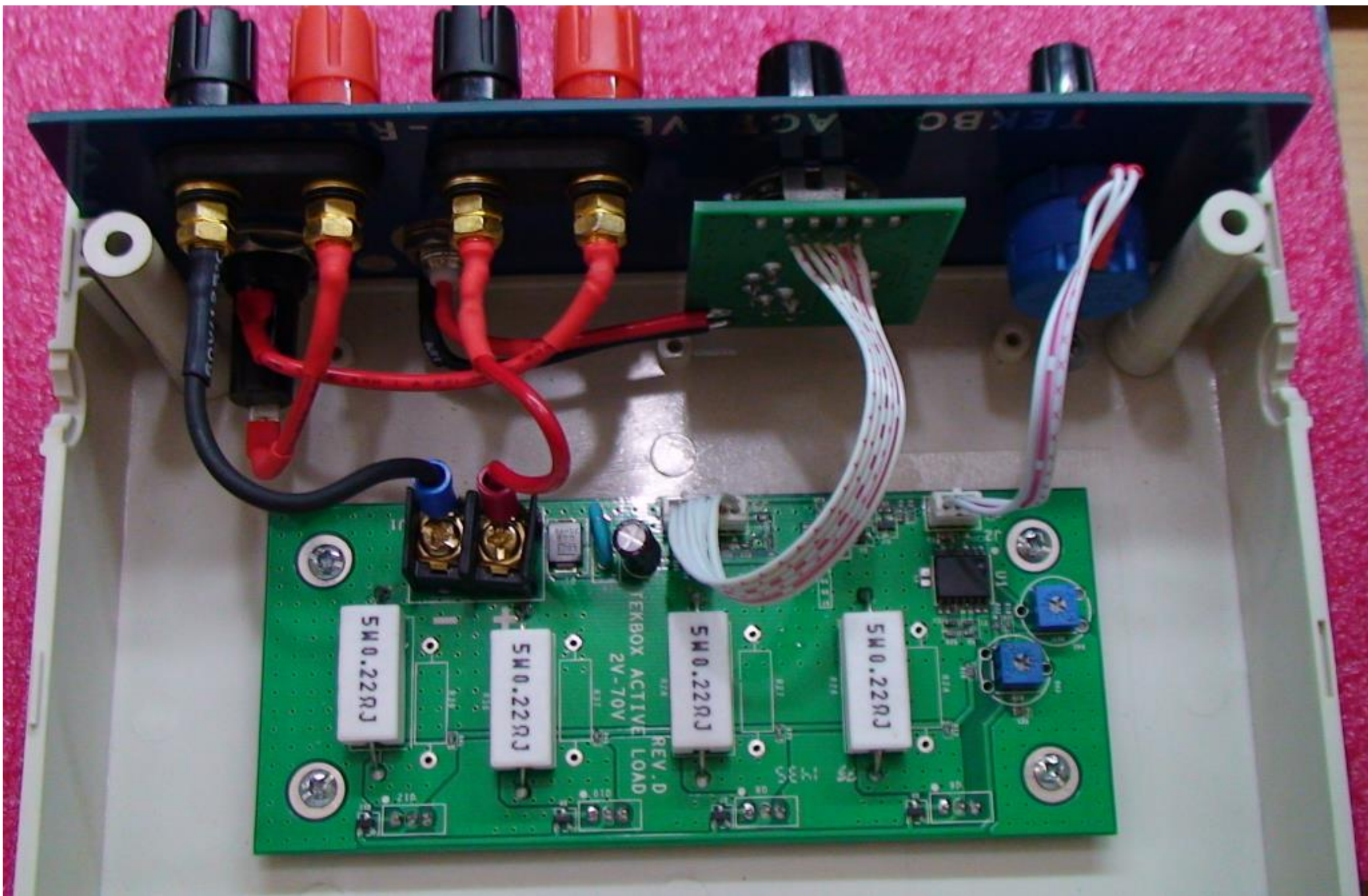


Switch board assembly:

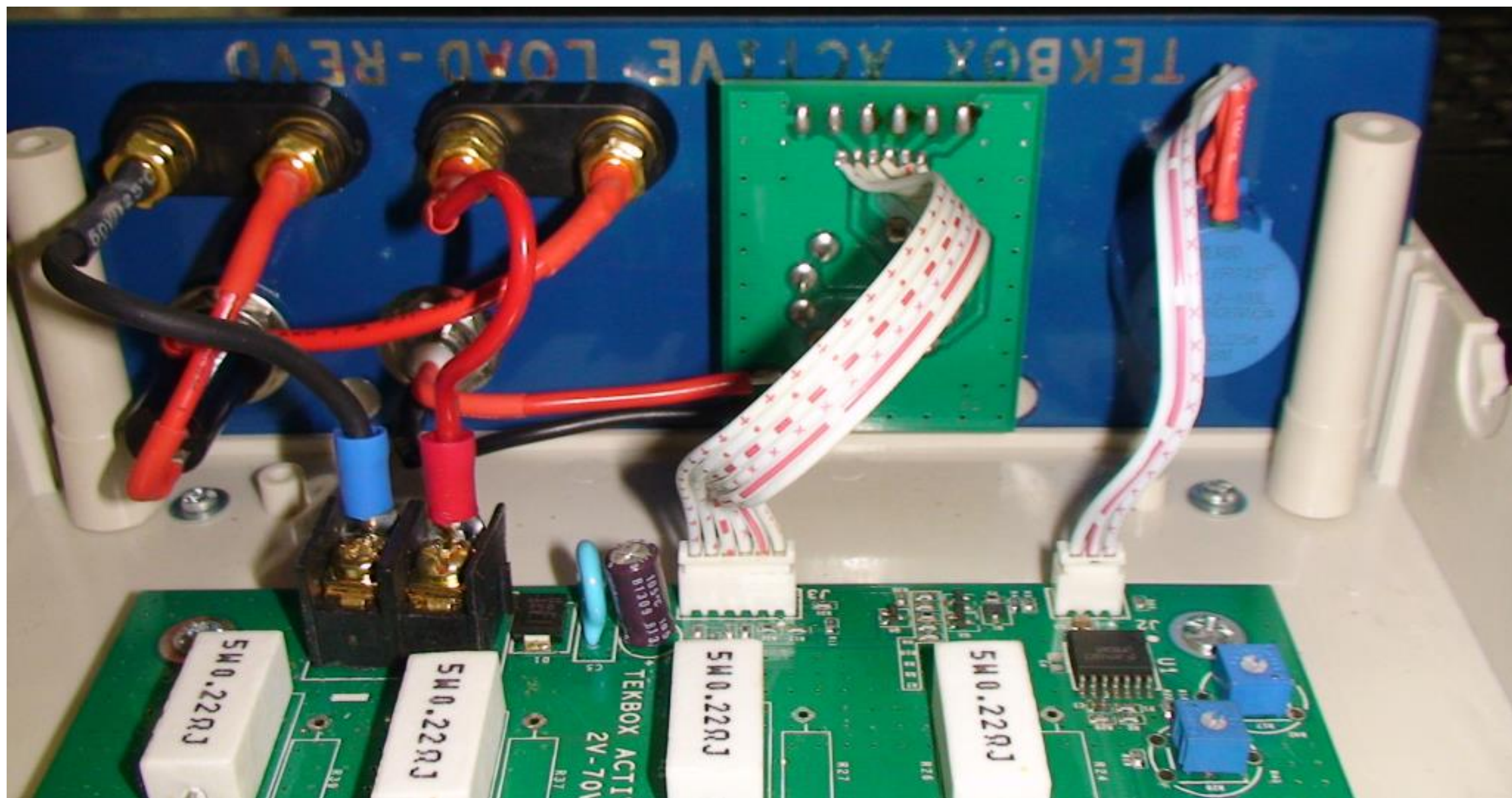












## Remarks:

When using different transistors than listed in the BOM, check the behaviour of the product at operating voltages below 2V.

Different transistors may cause oscillations at voltages close to or lower than 2V and require fine tuning of resistor values of the circuit.

The design is based on the *EDN, August 2005* article *Precision active load operates as low as 2V* by Joel Setton

By courtesy of Joel Setton, Crolles, France