

Rivets

Textile rivets:

Use press fasteners to connect wires to the roll-up groundplane. Punch holes into the groundplane to install male rivets. Wires can then be soldered to the top of female rivets. The rivet set from Prym contains male and female rivets and the required tools and dies to install the rivets.



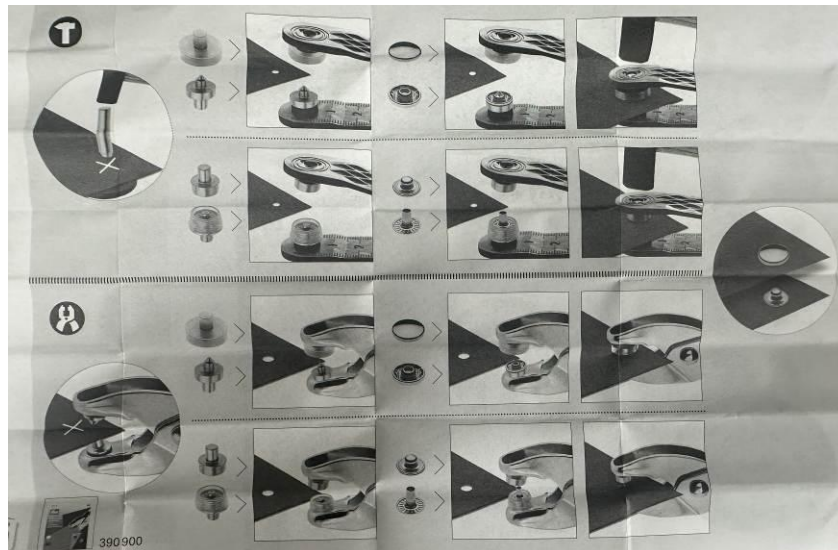
Prym rivet set

Rivets

1 Specification

Dimensions: 15 mm
Quantity: 10 pieces
Weight: 55.6 g
Material: plated brass
Part Number: Prym 390 301

2 Application



Prym User manual

Instructions:

1) Punch a hole



Punching tools

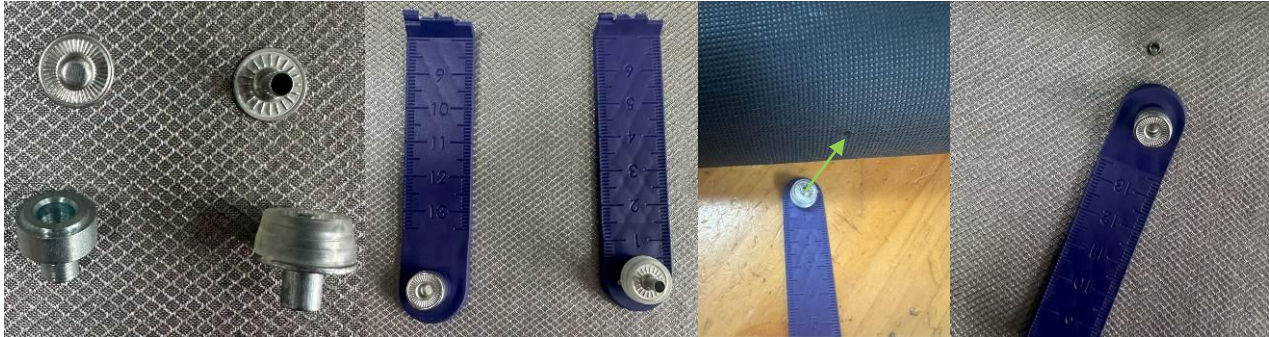
To protect the desk, place the plastic disk under the ground plane at the location of the rivet hole

Use a hammer to punch the hole

done

Rivets

2) Place the male rivet:



Male rivets and corresponding riveting dies

Out of the box, the riveting tool limits access to the edge of the groundplane only. For easier handling, break the riveting tool apart.

Position the bottom section of the male rivet under the groundplane

Position the top section of the male rivet



Join both rivet sections with a firm stroke



Done



Inspect the bottom side



To assemble female rivets, exchange the tool dies using a pointy tool

3) Join female rivets

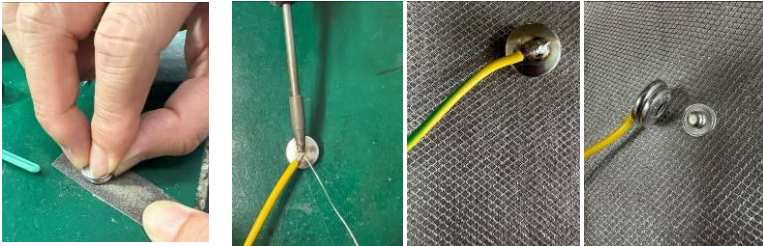


With the dies for female rivets in place, insert the female riveting sections and join it with a firm stroke

Done

Rivets

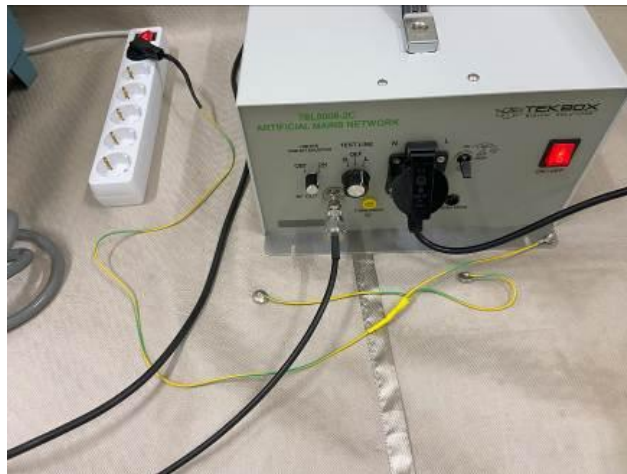
4) soldering female rivets



Sand the female rivet surface before soldering.

Female rivet with attached wire

Installation example:



Rivets to establish Earth connectivity in a conducted emission pre-compliance test setup

3 History

Version	Date	Author	Changes
V 1.0	10.06.2025	Tauchner	Creation of the document

4 Ordering Information

Part Number	Description
TBRS1	PRYM rivet set

TekBox Digital Solutions Vietnam Pte. Ltd.

www.tekbox.com

Factory 4, F4, Lot I-3B-1, Saigon Hi-Tech Park, Tan Phu Ward, Thu Duc, Ho Chi Minh City, Vietnam